

# Bartholin's Abscess Arising Within Hidradenoma Papilliferum Of The Vulva

S Docimo, W Shon, D Elkowitz

## Citation

S Docimo, W Shon, D Elkowitz. *Bartholin's Abscess Arising Within Hidradenoma Papilliferum Of The Vulva*. The Internet Journal of Pathology. 2008 Volume 8 Number 2.

## Abstract

Hidradenoma papilliferum is an uncommon, benign, cystic, papillary tumor that occurs almost exclusively in the female anogenital region. Bartholin's abscess is also an anogenital cystic lesion caused by obstruction of Bartholin's duct with an overlying infection. Concomitant presentation of Bartholin's abscess and Hidradenoma papilliferum is unique. A 43 year-old African American woman presented with a painful cystic mass on the left labia majora. A preoperative diagnosis of Bartholin's abscess was made. During excision and draining, an additional tan-brown dermal nodule was removed which demonstrated histological features of Hidradenoma papilliferum. We report what we believe to be the first case of Bartholin's abscess arising in hidradenoma papilliferum.

## INTRODUCTION

Hidradenoma papilliferum (HP) is an uncommon, benign, cystic, papillary tumor that occurs primarily in the vulva of Caucasian women, thought to arise from anogenital glands, and exhibits both eccrine and apocrine differentiation, with the latter being more common.[1] Bartholin's abscess is also an anogenital cystic lesion caused by partial or complete ductal obstruction with abscess formation subsequently following infection.[2] Concomitant presentation of Bartholin's abscess and Hidradenoma papilliferum is unique. We report to the best of our knowledge the first case of Bartholin's abscess arising in hidradenoma papilliferum.

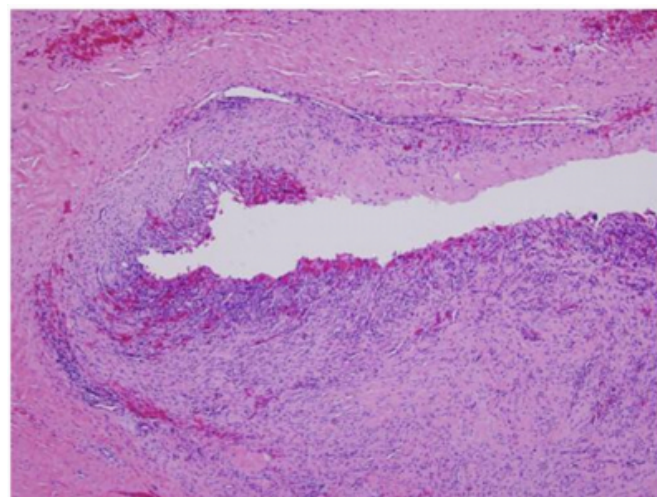
## CASE REPORT

A 43 year-old African American woman presented with a painful cystic mass on the left labia majora. Preoperatively, the lesion was diagnosed as Bartholin's abscess. During the excision and drainage, an additional 2.0 x 0.8 x 0.8 cm tan-brown dermal nodule was identified and submitted for histological analysis. Microscopic examination revealed multiple pieces of fibro-necrotic tissues (Fig. 1) associated with a well-circumscribed papillary neoplasm with cystic dilation (Fig. 2). The papillary projections and cystic areas were lined by basophilic cuboidal to columnar cells with outer compressed myoepithelial cells (Fig. 3). There were foci of active decapitation secretion and apocrine differentiation (Fig. 4). The diagnosis of Bartholin's abscess arising in hidradenoma papilliferum was made. Although

significant clinical correlations between these two lesions are not well understood at this point, the intimate association of hidradenoma papilliferum with Bartholin's abscess suggests partial or complete obstruction of ductal drainage by the tumor mass.

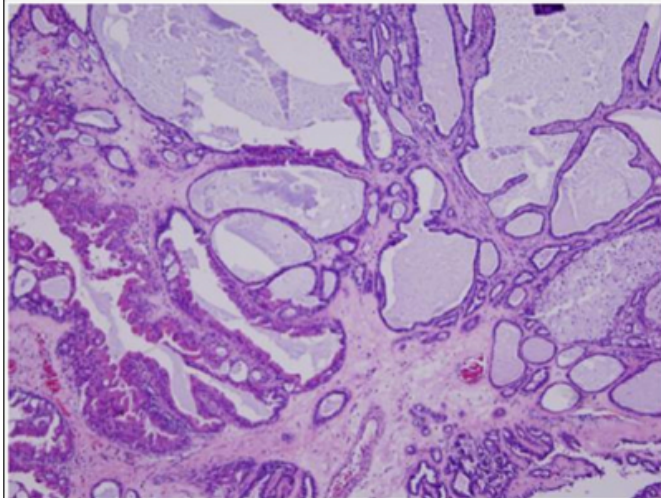
## Figure 1

Figure 1: Bartholin's abscess wall demonstrating fibro-necrotic tissues with acute and chronic inflammation. (Hematoxylin-eosin stain; original magnification: x10)



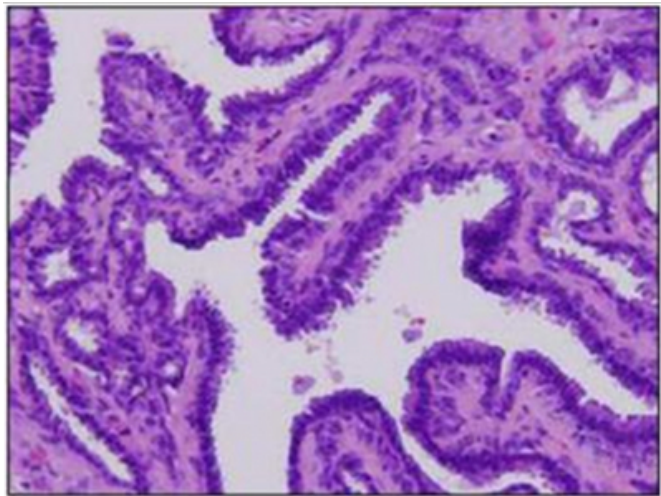
**Figure 2**

Figure 2: Papillary neoplasm with cystic dilation.  
(Hematoxylin-eosin stain; original magnification: x10)



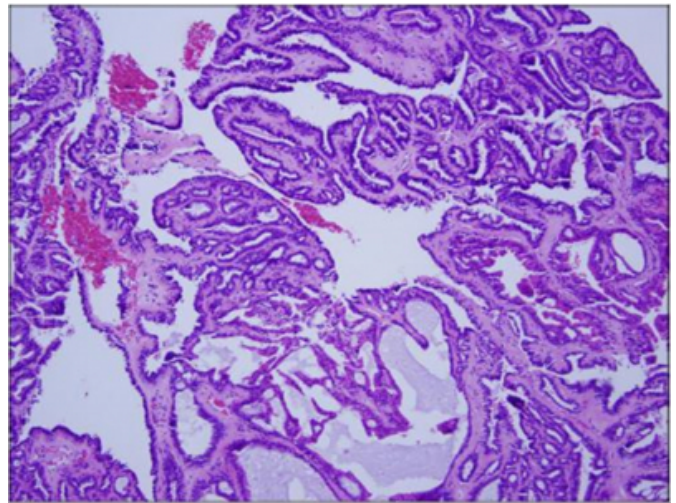
**Figure 3**

Figure 3: The papillary projections and cystic areas are lined by basophilic cuboidal to columnar cells with outer compressed myoepithelial cells. (Hematoxylin-eosin stain; original magnification: x10)



**Figure 4**

Figure 4: Hidradenoma papilliferum. Papillary neoplasm with foci of apocrine differentiation and cystic dilation.  
(Hematoxylin-eosin stain; original magnification: x10)



## DISCUSSION

Instances of pathology occurring concurrently with Bartholin's abscess or cyst do exist. Literature describes a case of cellular angiofibroma for which the preoperative diagnosis was Bartholin's glandular cyst.<sup>[3]</sup> Another case report described a vulvar mass that was preoperatively diagnosed as a Bartholin's duct cyst but found to be leiomyosarcoma, a rare gynecologic malignancy.<sup>[4]</sup>

Bartholin's glands are bilaterally located at the base of the labia minora and drain through 2- to 2.5-cm-long ducts that empty into the vestibule at the 4 o'clock and 8 o'clock positions.<sup>[5]</sup> Hidradenoma papilliferum usually presents as a slow-growing, small (2 mm to 3 cm) nodule which most commonly arise from the apocrine sweat glands between the labia majora and labia minora.<sup>[7]</sup> Woodworth et al. reported 38% of hidradenoma papilliferum originate from the labia majora and 26% originate from the labia minora.<sup>[8]</sup> Occurrence of hidradenoma papilliferum in the labia minora certainly presents the possibility of disrupting the ducts of Bartholin's glands which are located within the vicinity.

Due to hidradenoma papilliferum's mixed eccrine and apocrine features, cyst or abscess formation secondary to the disruption of ductal drainage should be considered.<sup>[8]</sup> Hidradenoma papilliferum should be present in the differential in the context of recurrent cysts/abscesses in the anogenital region.<sup>[9]</sup> The clinical differential diagnosis of a Bartholin's abscess, which includes mucous cysts, epidermal inclusion cysts, and hidradenoma papilliferum,<sup>[9]</sup> demonstrates the importance of maintaining an awareness of

differentiation between Bartholin's abscess and hidradenoma papilliferum.

Diagnostically, hidradenoma papilliferum tends to occur exclusively in post-pubescent white women between the ages of 30 and 70, occurring most commonly in the fourth decade.<sup>[8]</sup> Interestingly, our diagnosis of Bartholin's abscess arising in hidradenoma papilliferum was made in an African American woman, whereas, hidradenoma papilliferum tends to occur primarily in Caucasian women.<sup>[9]</sup>

Though it has been suggested surgical excision of Bartholin's abscess is unnecessary due to the low risk of Bartholin's gland cancer,<sup>[10]</sup> our finding of hidradenoma papilliferum and other mentioned neoplasms demonstrates the need for an increased level of suspicion with a preoperative diagnosis of Bartholin's abscess. Gynecologic oncology referral is also supported in patients older than 40 years of age to rule out adenocarcinoma.<sup>[11]</sup>

The clinical presentation of hidradenoma papilliferum becomes increasingly indistinct when simultaneously occurring with other cystic lesions of the vulva. A Bartholin's abscess warrants further histological analysis when hidradenoma papilliferum and other tumors are present in the differential diagnosis.

## **CORRESPONDENCE TO**

Salvatore Docimo, Jr.  
Anatomy and Pathology Academic Medicine Fellow

New York College of Osteopathic Medline  
Phone: 203-554-8114  
Fax: 516-686-7440

## **References**

1. Meeker JH, Neubecker RD, Helwig EB. Hidradenoma papilliferum. *Am J Clin Pathol* 1962; 37:182-195.
2. Marzano DA, Haefner HK. The Bartholin gland cyst: past present and future. *J Lower Genital Tract Dis* 2004; 8 (3):195-204.
3. Silva AC, Nascimento AG, Da Silva CS, Murta EF, Adad SJ. Cellular angiofibroma of the vulva: case report with clinicopathological and immunohistochemistry study. *Sao Paulo Med J*. 2005; 123(5):250-2
4. Dewdney S, Kennedy CM, Galask RP. Leiomyosarcoma of the vulva: a case report. *J Reprod Med*. 2005; 50(8):630-2.
5. Govan AD, Hodge C, Callander R. *Gynaecology illustrated*. 3d ed. New York: Churchill Livingstone, 1985:19,195-6.
6. Azzan BB. Bartholin's cyst and abscess. A review of treatment of 53 cases. *Br J Clin Pract* 1978;32(4): 101-2.
7. Kaufman RH. *Benign diseases of the vulva and vagina*. 4th ed. St Louis: Mosby, 1994:168-248.
8. Katz VL, editor. *Comprehensive Gynecology*. New York: Mosby-Elsevier; 2007
9. Crum CP, editor. *Diagnostic Gynecologic and Obstetric Pathology*. China: Elsevier Saunders; 2006.
10. Visco AG, Del Priore G. Postmenopausal Bartholin gland enlargement: a hospital-based cancer risk assessment. *Obstet Gynecol* 1996;87:286-90.
11. Omole F, Simmons B, Hacker Y. Management of bartholin's duct cyst and bland abscess. *Am Fam Physician* 2003; 68:135-40.

**Author Information**

**Salvatore Docimo, Jr.,BS**

Academic Medicine Fellow, Department of Pathology, New York College of Osteopathic Medicine

**Wonwoo Shon, BA**

Department of Pathology, New York College of Osteopathic Medicine

**David E. Elkowitz, DO**

Department of Pathology, New York College of Osteopathic Medicine