

Multiple Brain Tuberculomas And Role Of Open Brain Biopsy: A Case Report And Review

K Haddadian, O Rezaei, M Samadian

Citation

K Haddadian, O Rezaei, M Samadian. *Multiple Brain Tuberculomas And Role Of Open Brain Biopsy: A Case Report And Review*. The Internet Journal of Infectious Diseases. 2004 Volume 4 Number 1.

Abstract

A 59-year-old woman renal transplanted patient presented with gradually developed headache, febrile, diplopia, left sided paresis, and decreased level of consciousness. Contrast magnetic resonance imaging revealed multiple ring enhancing lesions from medulla to cortex.

Stereotactic brain biopsy of left frontal lobe lesion was unrevealing. Open brain biopsy was performed for right temporal lobe lesion. The excised lesion was 1.5 cm firmly encapsulated, and in histological examination revealed chronic inflammatory reaction loaded with acid-fast bacteria. Patient treated with antituberculous drugs and 6 week after treatment patient neurologic condition improved.

In patients with suspected brain tuberculoma the needle of CT guided stereotactic brain biopsy may not penetrate the firm capsule of tuberculoma and only surrounding brain tissue may be obtained. In such cases we recommend considering open brain biopsy from beginning for definitive diagnosis of brain tuberculomas.

BACKGROUND

Multiple brain tuberculomas are unusual and rare, even in immunocompromised patients (1, 2). Patients may be present without systemic evidence of tuberculosis. Diagnosis of these lesions is often difficult. We report a case of multiple intracranial tuberculomas whose diagnosis made not by CT-guided stereotactic brain biopsy (CT-SBB) but by open brain biopsy. Brain stem and cerebellar tuberculomas are rare (3,4,5,6) but our patient has multiple pontine, medullary and cerebellar lesions. The maximum reported number of tuberculoma in one patient was 100(7), our case is the second maximum reported lesions and has about forty lesions.

CASE PRESENTATION

The patient was a 59-year-old woman with history of idiopathic systemic hypertension for 15 years, who had been receiving immunosuppressive agents including ciclosporin after successful renal transplantation for hypertensive nephropathy for 32 months. She has gradually developed headache, decrease level of consciousness, febrile, diplopia and left side hemiparesis. CT scan demonstrated multiple hypodens lesions in pons, white matter and gray matter of

both frontal and temporal lobes with mild enhancement after intravenous contrast (Fig. 1). Brain MRI demonstrated multiple (forty) intracranial ring enhancing lesions involving whole brain in medulla, cerebellum, pons, basal ganglia, internal capsule and bilateral frontal, temporal and parietal cortexes without significant mass effect or hydrocephaly (Fig. 2). Although the MRI finding were consistent with those of previously reported cases of intracranial tuberculomas, but it was not conglomerate ring like enhancing appearances(8), other conditions such as malignant lymphoma and toxoplasmosis were not ruled out. CSF analysis was normal. PCR of CSF for mycobacterium tuberculosis was negative.

Figure 1

Figure 1: Axial enhanced CT scan of brain, showing three enhancing lesions in pons.

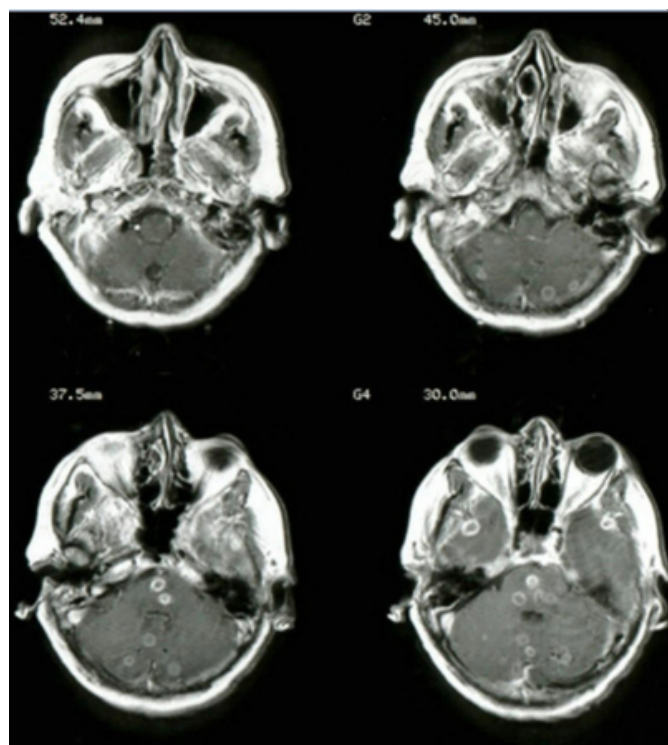
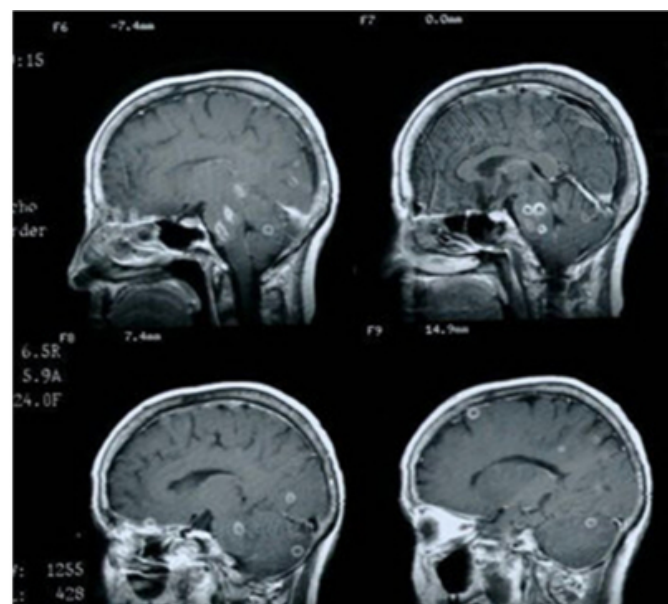


Figure 2

Figure 2: Sagittal T1-weighted MRI scans with gadolinium showing multiple ring enhancing lesions.



Hematological and biochemical examination results were normal. Radiological examination indicate normal chest finding. Therefore, CT-SBB targeting the left frontal lobe lesion was done for definitive diagnosis, but it was

unrevealing. With presumptive diagnosis of tuberculoma, the patient treated with antituberculous drugs, including isoniazid(300 mg/d), rifampin(600mg/d), pyrazinamide(1g/d), and ethambutol(800mg/d). One week after treatment, patient developed hepatic toxicity and treatment discontinued. Because of progressive deterioration of patients with presumptive diagnosis of toxoplasmosis, patients treated with pyrimethamine(50mg/d), sulfadiazine(4g/d), and folinic acid(5mg/d). Two week later no improvement was noted and patient refer to our center for further evaluations. On examination patient was febrile(axillary T=38.5 C), stuporic, left side hemiparesis(2-3/5), right side abducens palsy. Hematologic and biochemistry results were normal, except for mild elevated hepatic enzymes(AST=60, ALT=75). Chest radiograph was normal. An intradermal tuberculin test yielded negative results. In our center patient was admitted in intensive care unite and treatment with antitoxoplasmosis drugs, ciclosporin, phenytoin, and dexamethazone were continued, and low dose antituberculous drugs was reinitiated. Then MRI of brain was done, and revealed previous ring enhancing lesions from medulla to cortex with no improvement. For definite diagnosis of the lesions, we performed open brain biopsy of right temporal lobe lesion.

The excised lesion was 1.5 cm firmly encapsulated, and in histological examination revealed chronic inflammatory reaction loaded with acid fast bacteria. PCR for mycobacterium tuberculosis of specimen was also positive. Further administration of increasing dose of antituberculous drugs was continued and antitoxoplasmosis therapy discontinued. Six week after treatment eventually patient fully awake, and patient neurologic conditions including left hemiparesis and diplopia were improved.

DISCUSSION

Brain tuberculomas make up 5 to 8 per cent of intracranial masses in person in developing countries⁽⁹⁾. Before effective chemotherapy was available for tuberculosis, tuberculoma made up 20 per cent of intracranial lesions in one large series⁽¹⁰⁾. The incidence of neurotuberculosis in the United States is less than 0.5 per cent⁽¹¹⁾. The incidence of neurotuberculosis in any given community is directly related to the incidence of tuberculosis in general, and this, in turn, is related to socioeconomic conditions of that community⁽¹²⁾. Although these tuberculous lesions are located in areas where blood flow is greatest, they can occur anywhere in the brain, mainly in the cerebral or cerebellar hemispheres but rarely in the brain stem and basal ganglia⁽¹¹⁾. Another

interesting feature of our case is multiple pontine, medulla and cerebellar lesions. The increasing prevalence of atypical mycobacterial infections in patients with AIDS and other immunocompromised patient, will undoubtedly lead to a higher incidence of symptomatic tuberculosis of the central nervous system, including tuberculose meningitis and tuberculomas. The diagnosis of tuberculoma is often difficult. Patients present with signs and symptoms of increased intracranial pressure or with focal neurologic deficits over month to years^(9,10,13,14). Moreover, up to two thirds of patients will not have evidence of systemic tuberculosis and 50 per cent of patients will have normal chest radiographs⁽⁹⁾. Cerebrospinal fluid analysis is often not helpful, with slightly elevated protein levels and normal glucose concentrations⁽¹⁵⁾. Tuberculoma have been reported to mimic glioma, CPA lesions, pinealoma and meningioma^(1,17,18,19). Modern imaging is often not helpful in differentiating tuberculoma from glioma or metastatic lesions^(9,20). Because the different therapeutic plan in immunocompromised patients, the diagnosis of brain lesion is very important. For this reason many authors perform surgical biopsy (open or stereotactic brain biopsy) for surgically accessible lesions⁽²¹⁾. To provide histological diagnosis of brain lesions, CT-guided stereotactic brain biopsy has been widely used, because its less invasive technique compared with open brain biopsy (OBB)⁽²²⁾. However as recommendation has been made previously by two Japanese groups ^(23, 24) CT-SBB is not always diagnostic and early open brain biopsy may be considered.

CONCLUSION

In clinical studies brain tuberculomas are commonly single, but as many as 100 lesions have been found in one patient⁽⁷⁾ and our case is the second after that and has 40 lesions. In case of intracranial tuberculoma, the needle of CT-SBB may not penetrate the firm capsule of tuberculoma and only surrounding brain tissue may be obtained as in our case. Therefore, if brain tuberculoma is one of the primary differential diagnosis of ring enhancing lesions we recommend considering open brain biopsy from the beginning for definitive diagnosis of intracranial tuberculoma. As in our case brain tuberculoma may involve brain stem and cerebellum.

ACKNOWLEDGEMENT

Written consent was obtained from the patient for publication of the patient's details.

CORRESPONDENCE TO

Mohammad Samadian Department of Neurosurgery, Loghman-e-Hakim Medical Center, Kamali Ave., Tehran, IRAN. Telephone: +98-21-5414065; +98-21-5419005-9. Fax: +98-21-5414065. Mobile: +98-9123262849 Email: mdsamadian@hotmail.com

References

1. Wang KC, Lin SM, Chen Y, and Tseng SH: Multiple tuberculous brain abscesses. *Scand J Infect Dis.* 2002; 34(12):931-4
2. Yen HL, Lee RJ, Lin JW, and Chen HJ: Multiple tuberculomas in the brain and spinal cord: a case report *Spine.* 2003 Dec 1; 28(23):E499-502.
3. Verdura J, Tobias S: Granulomatous disease of the central nervous system, in Youmans JR(ed) neurological surgery. Philadelphia, W B sounders Co., pp 3266-3270, 1996.
4. Menon V, Gogoi M, Saxena R, Singh S, Kumar A: Isolated "one and a half syndrome" with brainstem tuberculoma. *Indian J Pediatr.* 2004 May; 71(5):469-71.
5. Gasparetto EL, Tazoniero P, de Carvalho Neto A: Disseminated tuberculosis in a pregnant woman presenting with numerous brain tuberculomas: case report: *Arq Neuropsiquiatr.* 2003 Sep; 61(3B):855-8.
6. Kumar R, Singh V: Intramedullary mass lesion of the spinal cord in children of a developing milieu. *Pediatr Neurosurg.* 2004 Jan-Feb; 40(1):16-22.
7. Wasay M, Moolani MK, Zaheer J, Khealani BA, Smego AR, Sarwari RA: Prognostic indicators in patients with intracranial tuberculoma: a review of 102 cases. *J Pak Med Assoc.* 2004 Feb; 54(2):83-7.
8. Kim TK, Chang KH, Kim CJ, Goo JM, Han MH: Intracranial tuberculoma: comparison of MR with pathologic findings. *A J Neuroradiol* 1995, 16:1903-8.
9. Bouchama A, Al-Kawi MZ, Kannan I: Brain biopsy in tuberculoma: The risks and benefits. *Neurosurgery* 1991, 28:405 .
10. Rammamurthi B, Varadarajan M: Diagnosis of tuberculoma of the brain. *J Neurosurg* 1961, 18:1.
11. Sheller J R, des Prez R M: CNS tuberculosis. *Neurol clin* 1986;4:143.
12. Abdul-ghaffar N U, El-Sonbaty MR, Rahman NA: Intracranial tuberculoma in Kuwait. *Int J Tuberc Lung Dis* 1998, 2:413-8.
13. Obrador S: Intracranial tuberculoma: A review of 47 cases. *Neurochirurgie* 1959,1:150.
14. Arseni C: Two hundred and one cases of intracranial tuberculoma treated surgically. *J Neurol Neurosurg Psychiatry* 1958 , 21:308.
15. Talamas O, del Brutto OH, Garcia-ramos G: Brain stem tuberculoma. *Arch Neurol* 1989, 46:529.
16. Borne G: Trigeminal neuralgia as presenting symptom of a tuberculoma of the cerebellopontine angle. *J Neurosurg* 1968, 28:480.
17. Dastur HM, Desai AD: A comparative study of brain tuberculomas and glioma based upon 117 cases records of each. *Brain* 1965, 88:375.
18. Elisevich K, Arpin EJ: Tuberculoma masquerading as a meningioma. *J Neurosurg* 1982, 56:435 .
19. Bauer J, Johnson RF, Pojman DV, Ruge JR: Tuberculoma presenting as an en plaque meningioma. *J Neurosurg* 1996,85:685-8 .
20. El-Sonbaty MR, Abdul-gaffar NU, Marafy AA: Multiple intracranial tuberculoma mimicking brain metastases. *Tuber Lung Dis* 1995,44:271-2.

21. Apuzzo M L J, Chen T C, and Hinton D R: Diagnostic biopsy for neurological disease, in Youmans J R(ed): Neurological Surgery. Philadelphia, W B Saunders Co., pp 334-335,1996.
22. Mohanty A, Venkatarama SK, Vasudev MK, Khanna N, Anandh B: Role of stereotactic aspiration in the management of tuberculous brain abscess. Surg Neurol 1999, 51:443-6.
23. Sakuma R, Jin K, Nagai M, Kinpara T, Shiga Y, Fujihara K, Itoyama Y: A case of multiple intracranial tuberculoma diagnosed by open brain biopsy. Rinsho Shinkeigaku. 1997 Oct;37(10):895-9.
24. Nakamura H, Tanaka H, Ibayashi S, Fujishima M: A case of intracranial tuberculoma early diagnosed by open brain biopsy. No To Shinkei. 2001 Apr;53(4):387-90.

Author Information

Karim Haddadian

Professor of Neurosurgery, Department of Neurosurgery, Loghman-e-Hakim Medical Center, Shahid Beheshti University of Medical Sciences

Omidvar Rezaei

Professor of Neurosurgery, Department of Neurosurgery, Loghman-e-Hakim Medical Center, Shahid Beheshti University of Medical Sciences

Mohammad Samadian, Assistant Professor of Neurosurgery

Department of Neurosurgery, Loghman-e-Hakim Medical Center, Shahid Beheshti University of Medical Sciences