

Radiology Quiz - Breast

M Baj

Citation

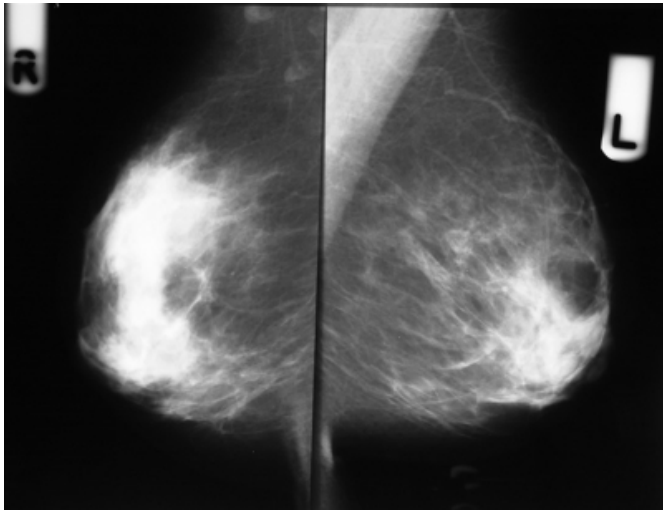
M Baj. *Radiology Quiz - Breast*. The Internet Journal of Radiology. 2008 Volume 10 Number 1.

Abstract

A 37 Years old female referred for Mammogram for routine screening programme of Breast. She had a family h/o breast cancer. Her mother died at the age of 64 yrs with breast cancer.

What is your Diagnosis?

Figure 1



RADIOLOGICAL DIAGNOSIS

POLAND'S SYNDROME

Poland's Syndrome is a rare congenital anomaly consisting of unilateral partial or total absence of a breast and/or pectoralis major muscle, and ipsilateral symbrachydactyly.

Many structural and functional abnormalities have been described in association with the syndrome including malformations of the anterior chest wall and breast.

Its incidence is one in 30,000 live births. The condition is more frequent among males, and usually occurs on the right hemithorax in the unilateral form. The syndrome is believed to be caused by a genetic disorder that reduces the embryonic circulation in the anterior chest artery: the stronger the interaction, the more severe the pathology. Originally, Poland's syndrome was named "Poland's syndactyly" but the Poland's syndrome can be without anomaly of homolateral upper end, the major element is muscular agenesis of sternocostal pectoralis major.

Poland's syndrome can be associated with breast cancer so all females with the syndrome should be thoroughly examines for early detection of neoplasia.

References

1. Legbo JN, Poland's syndrome: report of a variant: Erratum in: J Natl Med Assoc. 2006 Feb; (2): 128.
2. Deniz O et al, Poland's Syndrome (a case report): Tuberk Toraks. 2005; 53 (3): 275-9
3. Ferraro GA et al, Poland's syndrome: description of an atypical variant. Aesthetic Plast Surg. 2005 Jan-Feb; 29(1): 32-3.
4. Foucra SL, Grolleau JL, Chavoïn JP, (Poland's syndrome and hand's malformations: about a clinic series of 37 patients) Ann Chir Plast Esthet. 2005 Apr; 50(2): 138-45
5. Tamiolakis D. et al, Breast cancer development in a female with Poland's syndrome. Onkologie. 2004 Dec; 27(6): 569-71

Author Information

Mahesh Baj

Consultant Radiologist, Roscommon County Hospital