

# Isolated non- compaction of left ventricular myocardium . A 3D perspective”

B PAUL

## Citation

B PAUL. *Isolated non- compaction of left ventricular myocardium . A 3D perspective”*. The Internet Journal of Cardiology. 2009 Volume 8 Number 2.

## Abstract

Isolated non-compaction of left ventricular myocardium is an uncommon anomaly . It is characterized by prominent trabeculations and recesses communicating with the left ventricular cavity on 2D echocardiography . We studied a case of non compacted left ventricle by 3D echocardiography . The left ventricle appeared to be filled with tissue with ‘spongy’ appearance . Cropping the apex of the left ventricle showed a ‘sievelike’ pattern. These findings were in addition to the characteristic trabeculations and recesses seen on 2D echocardiography .

## Figure 1

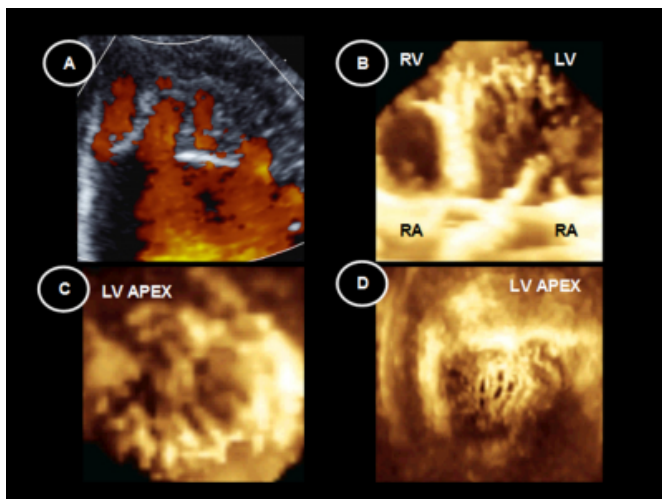


Figure 1a: 2D image of LV apex showing trabeculations and recesses communication with the LV cavity

Figure 1b 3D image showing ‘spongy’ appearance of LV apex

Figure 1c: Zoomed 3D image of LV apex showing trabeculations and recesses

Figure 1d: Cropping of LV apex shows a ‘sievelike’ pattern

## References

**Author Information**

**BISWAJIT PAUL, (D N B CARDIOLOGY)**

CONSULTANT CARDIOLOGIST, DEPARTMENT OF NON INVASIVE CARDIOLOGY, ESCORTS HEART  
INSTITUTE & RESEARCH CENTRE